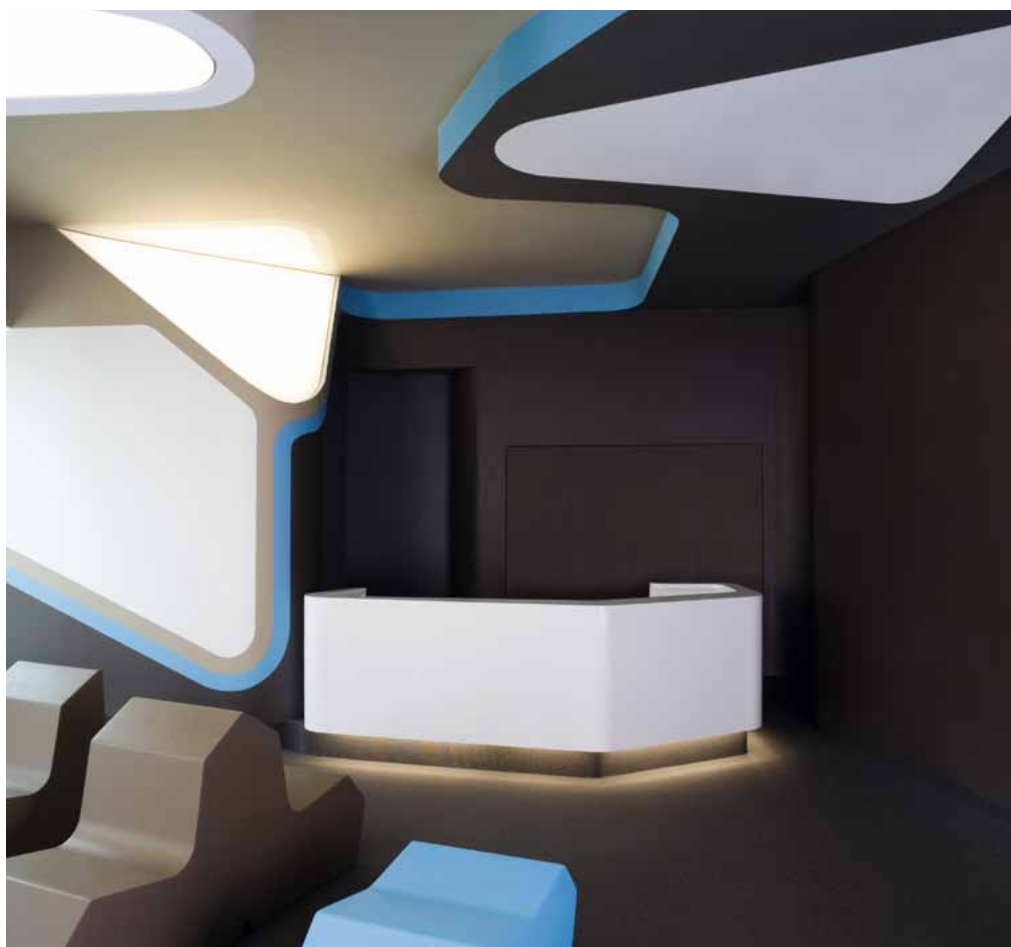


Project | interior



Creating space within a space. Centre for dentistry, Hamburg (GER)

[Architecture | Project]

J. Mayer H. Architects have demonstrated with great aplomb how, by applying a sophisticated architectural concept and clever material combinations, new spaces can be created within a space in a dentistry centre in Hamburg. The facility designed by the Berlin architectural office and completed at the beginning of 2009 is located in a doctor's practice in the Hamburg district of St. Georg near the city centre. Covering a total floor area of 400 m² – with a room height of 3.75 m – a number of core elements were initially installed in order to create the spatial separation between the various functions such as waiting room, consultancy zone and treatment area. The elements structuring the space enclose not only these functional units but also the X-ray and oral hygiene zones. A further moving element allows the waiting

area to be extended into an auditorium for specialist presentations. The "X-chairs" with their soft materials and simple lines were especially designed for this environment by the architects to impart a calming atmosphere to the dentist's waiting room. A colour scheme based on brown and blue tones is reflected in the walls, ceilings and core elements, creating a gently flowing, integrating effect. A further contribution to the concept of combining permeability with secure closeness comes in the form of the TENSOR double-action glass hinges from DORMA. These create the impression of transparency and openness while also enabling the rooms to be efficiently partitioned. And TENSOR hinges offer the additional advantage that they can be directly attached to the masonry.

Project
Centre for Dentistry,
Hamburg, Germany

Architects
J. Mayer H. Architects,
Berlin, Germany

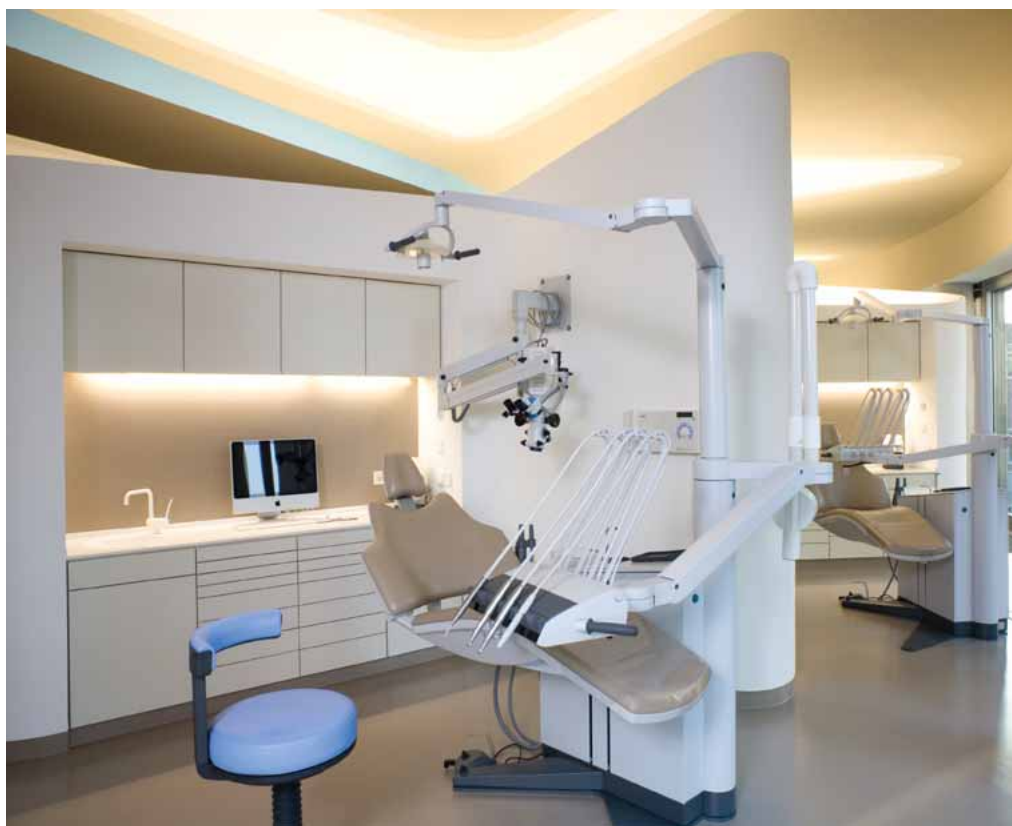
Client
Brauner-Wegner-Priehn
Centre for Dentistry

Photos
Ludger Paffrath, Berlin,
Germany

DORMA products
TENSOR double-action glass
door hinges

[Details]

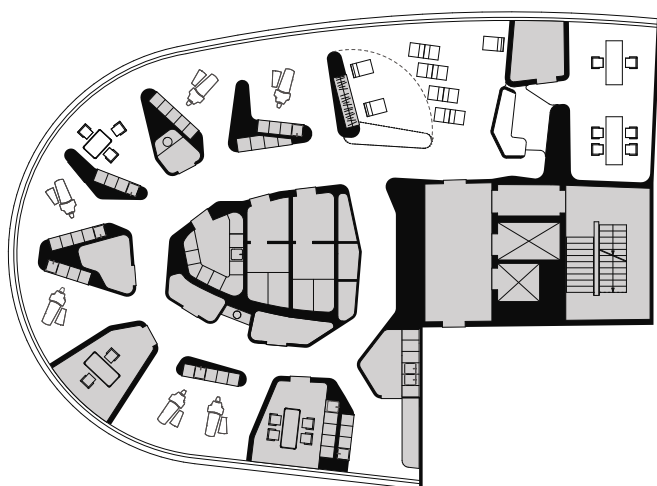
Project | interior



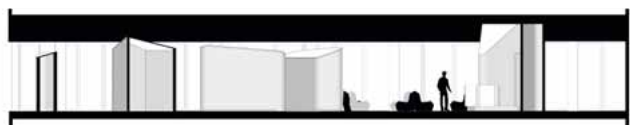
Luminaires in the core elements reflecting against the angled surfaces of the ceilings create indirect light, accentuating the individuality of the spaces served.



Reliably return the double-action door to its zero position: TENSOR hinges.



New spaces for different functions, such as waiting, consultancy and treatment areas, have been created with the freely-positioned core elements structuring a total floor area of 400 m².



Centre for dentistry, Hamburg (GER)

DORMA GmbH + Co. KG, DORMA Platz 1, D-58256 Ennepetal, Phone +49 2333 793-0, www.dorma.com